

香港知專設計學院

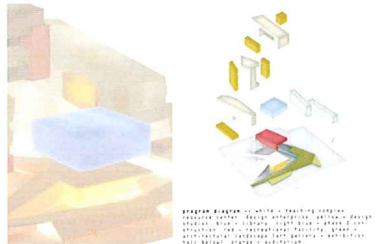
INTERNATIONAL ARCHITECTURAL DESIGN COMPETITION



Image 1 - southwest perspective



Image 2 - southwest perspective



Program diagram with a flexible volume structure. The building is designed to be flexible and adaptable to future changes in program and use. The diagram shows the main building and its connection to the surrounding area.



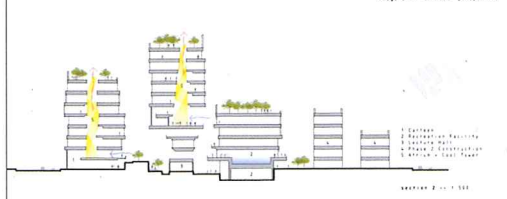
Image 3 - southwest perspective



Level 1 - 0 to 10 m - 1st floor
Level 2 - 10 to 20 m - 2nd floor
Level 3 - 20 to 30 m - 3rd floor
Level 4 - 30 to 40 m - 4th floor
Level 5 - 40 to 50 m - 5th floor
Level 6 - 50 to 60 m - 6th floor
Level 7 - 60 to 70 m - 7th floor
Level 8 - 70 to 80 m - 8th floor
Level 9 - 80 to 90 m - 9th floor
Level 10 - 90 to 100 m - 10th floor



Level 1 - 0 to 10 m - 1st floor
Level 2 - 10 to 20 m - 2nd floor
Level 3 - 20 to 30 m - 3rd floor
Level 4 - 30 to 40 m - 4th floor
Level 5 - 40 to 50 m - 5th floor
Level 6 - 50 to 60 m - 6th floor
Level 7 - 60 to 70 m - 7th floor
Level 8 - 70 to 80 m - 8th floor
Level 9 - 80 to 90 m - 9th floor
Level 10 - 90 to 100 m - 10th floor



Level 1 - 0 to 10 m - 1st floor
Level 2 - 10 to 20 m - 2nd floor
Level 3 - 20 to 30 m - 3rd floor
Level 4 - 30 to 40 m - 4th floor
Level 5 - 40 to 50 m - 5th floor
Level 6 - 50 to 60 m - 6th floor
Level 7 - 60 to 70 m - 7th floor
Level 8 - 70 to 80 m - 8th floor
Level 9 - 80 to 90 m - 9th floor
Level 10 - 90 to 100 m - 10th floor

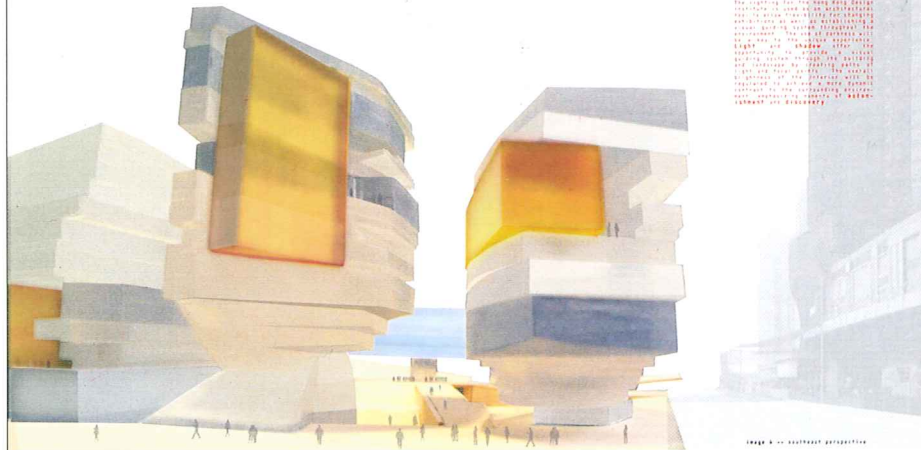


Image 4 - southwest perspective

The building is designed to be flexible and adaptable to future changes in program and use. The diagram shows the main building and its connection to the surrounding area.

The building is designed to be flexible and adaptable to future changes in program and use. The diagram shows the main building and its connection to the surrounding area.

The building is designed to be flexible and adaptable to future changes in program and use. The diagram shows the main building and its connection to the surrounding area.

The building is designed to be flexible and adaptable to future changes in program and use. The diagram shows the main building and its connection to the surrounding area.

The building is designed to be flexible and adaptable to future changes in program and use. The diagram shows the main building and its connection to the surrounding area.

The building is designed to be flexible and adaptable to future changes in program and use. The diagram shows the main building and its connection to the surrounding area.

The building is designed to be flexible and adaptable to future changes in program and use. The diagram shows the main building and its connection to the surrounding area.

The building is designed to be flexible and adaptable to future changes in program and use. The diagram shows the main building and its connection to the surrounding area.

The building is designed to be flexible and adaptable to future changes in program and use. The diagram shows the main building and its connection to the surrounding area.

The building is designed to be flexible and adaptable to future changes in program and use. The diagram shows the main building and its connection to the surrounding area.

The building is designed to be flexible and adaptable to future changes in program and use. The diagram shows the main building and its connection to the surrounding area.

The building is designed to be flexible and adaptable to future changes in program and use. The diagram shows the main building and its connection to the surrounding area.

The building is designed to be flexible and adaptable to future changes in program and use. The diagram shows the main building and its connection to the surrounding area.

The building is designed to be flexible and adaptable to future changes in program and use. The diagram shows the main building and its connection to the surrounding area.

The building is designed to be flexible and adaptable to future changes in program and use. The diagram shows the main building and its connection to the surrounding area.

Country

USA

Team Leader

Kolidpouls, Peter