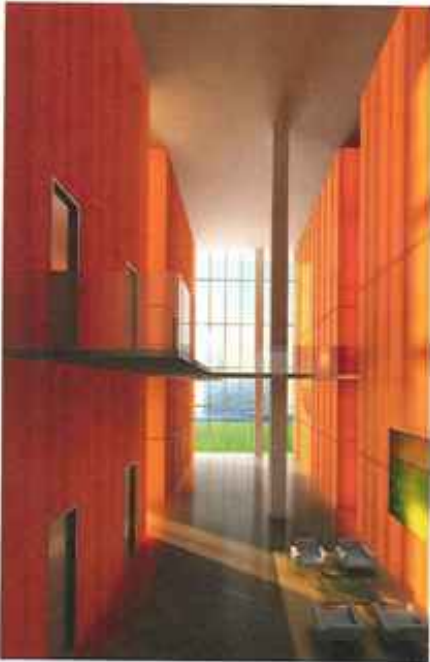


LANDSOURCE TEMPE

The basis of the building design was to develop a vertically integrated neighborhood, with an emphasis on identity, connectivity to neighbors, and gathering spaces. A prominent, articulated entry and lobby at ground level highlights the transparency to the street, while live/work environments reinforce the vertically integrated neighborhood. The "green roof" over the three story parking deck, is utilized as an amenities deck, providing a community gathering space that includes appropriate desert landscaping, shade, and a swimming pool.

01 Lobby 02 Exterior view by night 03 Community space: swimming pool 04 Detail living unit

Renderings: Circle West



01



03



04